

Let's Get to the Root of the Problem

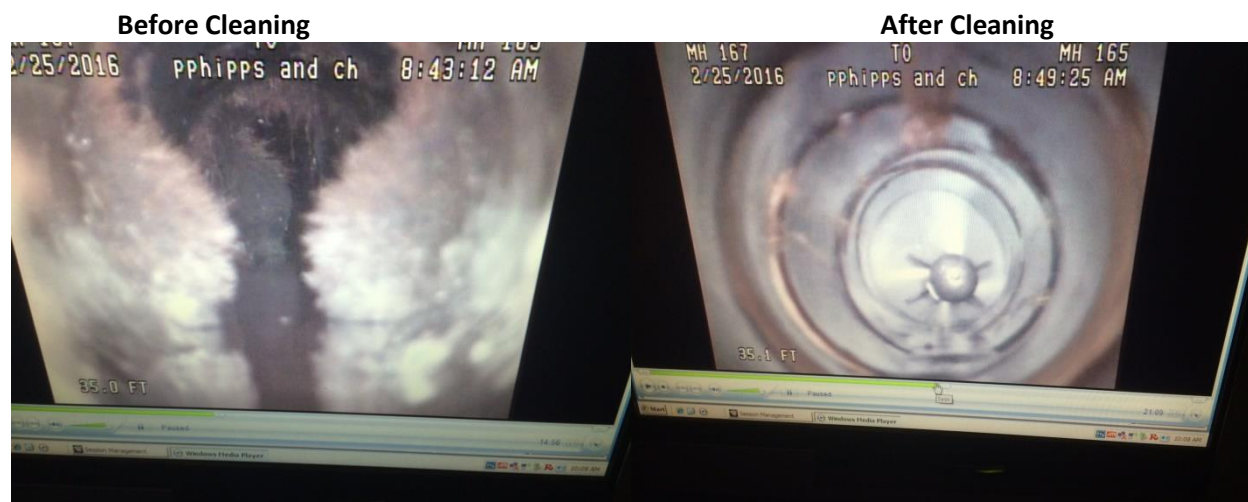
The Rice Lake Utilities encourages homeowners to perform private sanitary sewer service line maintenance.

Basement sewer backups are not only a real mess to clean up but are also a health concern. As a result, the Rice Lake Utilities is recommending that each homeowner and business in the City perform annual (or as often as needed) routine sanitary sewer service line cleaning and root cutting. Tree roots seek this source of water in one's yard and are often the main culprits of sanitary sewer service backups. In some areas of the City, root intrusion is a serious problem and can cause sewer backups for homeowners. Routine maintenance will reduce the risk of creating these backups. In addition, wastes can accumulate in the sewer service line, creating a blockage.

Property owners are responsible for the routine maintenance of the sanitary sewer lateral line from their home or business to the sanitary sewer main. In the event of an emergency where a sanitary sewer service line is backed up, the homeowner or his/her contractor should contact the Rice Lake Utilities as soon as possible.

Homeowners are also encouraged to contact the insurance company holding their homeowner's or rental insurance policy to verify whether they will cover sewer backups and to even consider separate coverage if the current policy does not cover sanitary sewer backup damage.

It will be a great help if both homeowners and City businesses perform routine sanitary lateral sewer service line maintenance to avoid a messy problem and keep out the roots.



Above: Rice Lake Utilities Sewer Main Cleaning Pictures before and after using high pressure rotating water nozzle designed for effective root removal